

A Closer Look

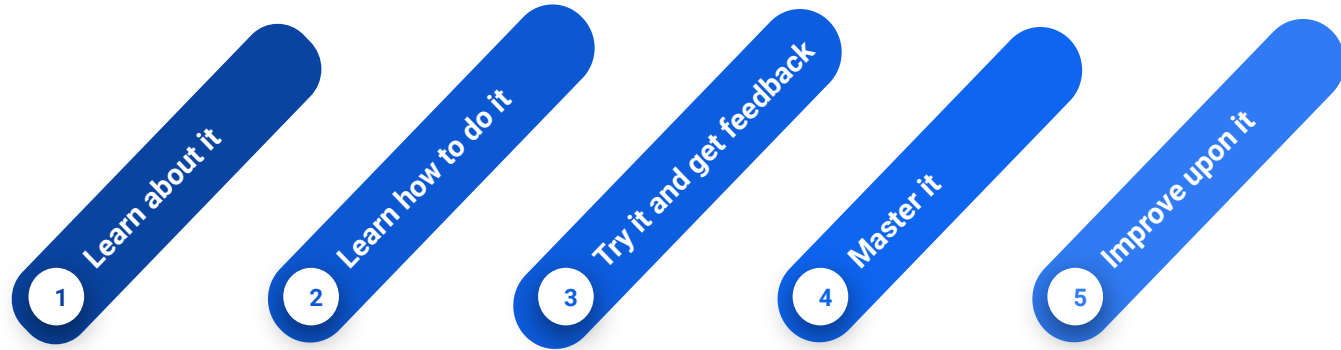
Colchester Public Schools
Superintendent's Proposed Budget



Recap

- 8.99% Increase
- Reduction of 12 positions
- 4.0 Instructional Positions returning to the budget from Stimulus
- Requesting the addition of safety officers at each school

Budget Priorities: Systems of Improvement



**EDUCATOR
PROFESSIONAL
EXPERIENCES**

Professional Development

Modeling by Instructional Coaches

Inst. Coaching Cycles

Teacher Leadership & Professional Learning Communities (PLC)

Safety and Security

All schools have a variety of infrastructure, policies and procedures, and technology to support security needs and emergency response.

	Current	Proposed	Comparable 1 (Montville)	Comparable 2 (East Haddam)
School Resource Officer	1.0 district-wide	1.0 district-wide	3.0 district-wide	1.0 district-wide
Hall Monitors	1.0 @ BA	1.0 @ BA	Paras & Admin	Paras & Admin
Safety Officers	0.0 per building	1.0 per building	1.2 per building	0.66 per building
Screened Entry	CES, JJIS, BA only	Yes	Yes	Yes

Pupil Services & Special Education: The Work Ahead



Pupil Services & Special Education Department Priorities

Communication & Partnership

Provide building-based administrative support and partnership with families.

CT-SEDS

Continue our significant work related to PPT process and training staff & administrators in this new requirement

Specialized Instruction & Programming

Responsive to a wide range of students' needs



Professional Development

Continued extensive & focused PD across the department

Procedures & Practices

Ensure fidelity & alignment of our procedures to IDEA

High Quality IEPs & 504 Plans

Alignment with IDEA & Section 504 of the Rehabilitation Act

CES Reading & Math Instruction: High Academic Standards for Growth

1

The Science of Reading

Explicit, systematic
reading instruction
CT State Law

2

Reading includes:

- Phonemic Awareness
- Phonics
- Fluency
- Vocabulary
- Comprehension

3

Small group instruction

40 minutes of push in reading
Two groups running simultaneously
Support students on their instructional
focus



Foundational Math Skills

8 mathematical practices
Fact fluency
Problem solving
Number formation

4

5

Small group instruction

30 minutes of push in math
Increases small groups

Benchmarks & Progress Monitoring

6

Benchmark 3 times per year
Progress monitor based on instructional
focus
5 Data Team meetings per year

Instructional & Social Emotional Support For Each Child: Focus on The Whole Child:

The climate and culture in our schools support student acceptance, connectedness, and readiness to learn

Use of Data

Used to determine an instructional focus for every learner.

Supporting Learners

Receive core instruction and additional instruction based on their area of need from our reading and math interventionists

Smaller Class Sizes

Help teachers provide the maximum amount of support and focus on each child.



Special Education

Enable us to support students in need of specialized instruction

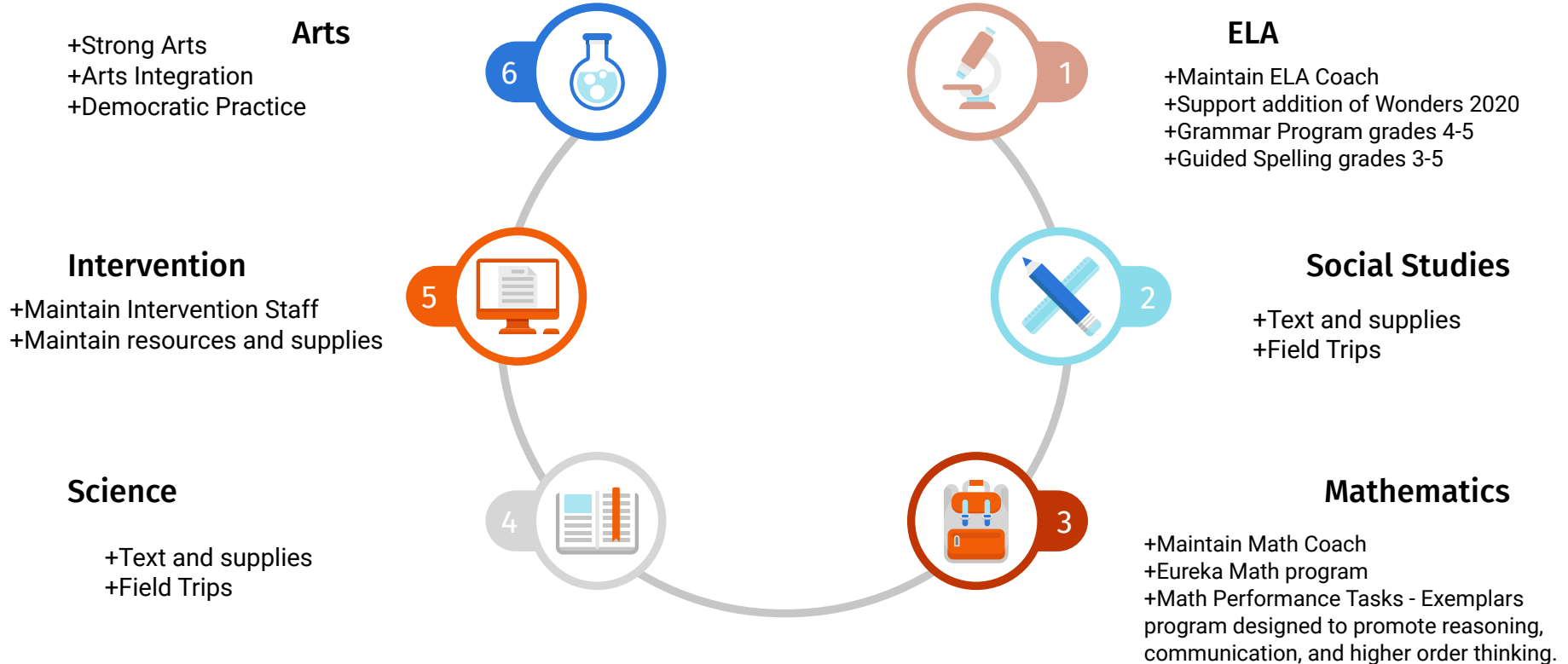
Specialized Classrooms

For students whose educational disabilities impact all areas of their day and a behavior program

Student Wellness Team

Focuses on both staff and students with social and emotional learning

JJIS Priority #1: Student Achievement & Impacts



JJIS Priority #2: Connected Community of Learners & Impacts

Class Size

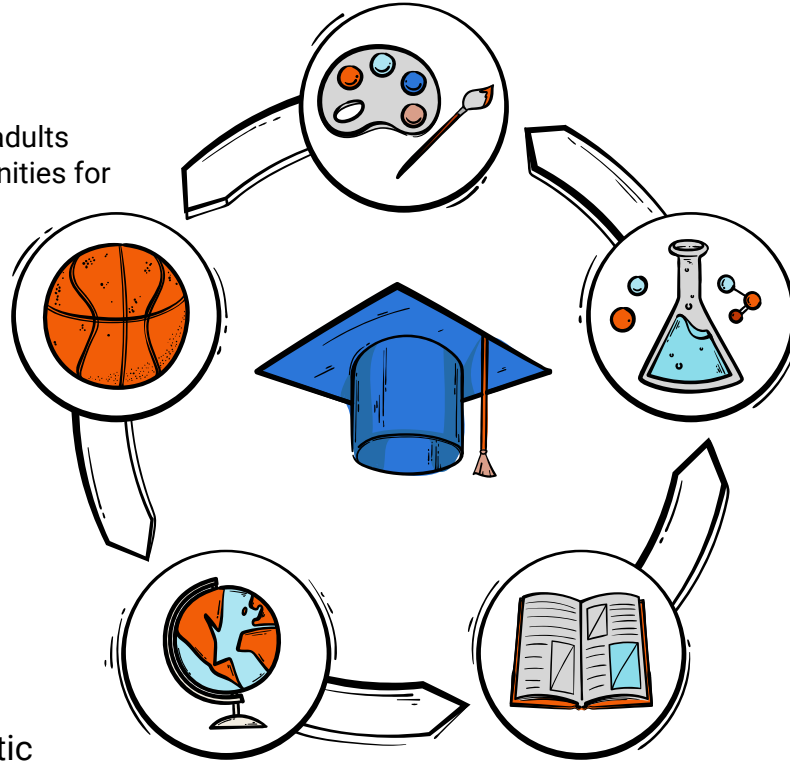
Students learn more and faster
More opportunities to connect with adults
Increases class community, opportunities for feedback and participation

Safety

Safe and Secure Building

HOT Schools

Strong Arts
Arts Integration Democratic Practice



Wellness

PBIS

Additional need: [Pro social skills program](#)

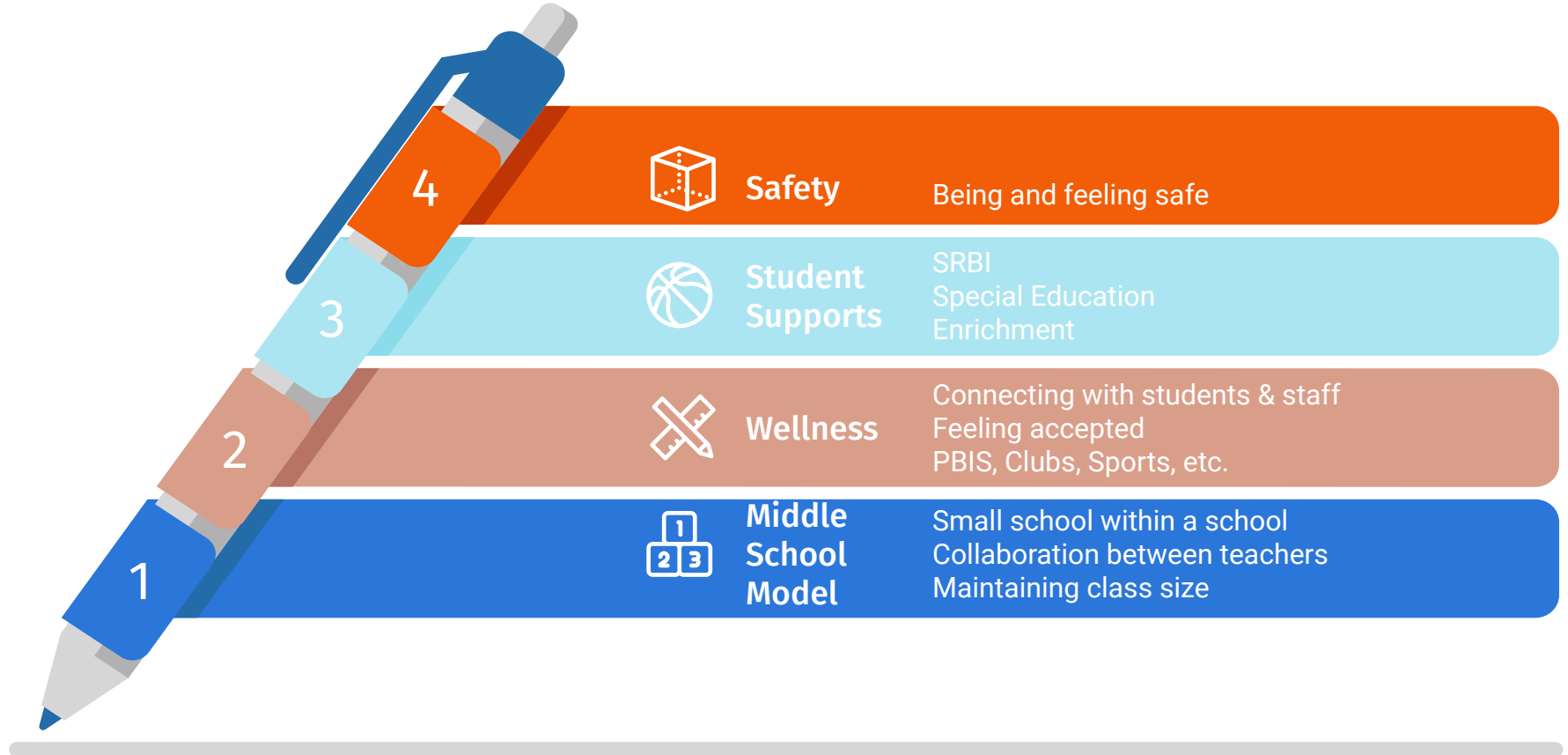
How is this different from PBIS?

A social skills curriculum will focus on teaching students positive behavior through learning new skills, while PBIS focuses on preventing the disruptive behavior by rewarding expected behaviors.

Enrichment

Invention Convention
Lego Robotics
Math Olympiad
Unified Sports
Jazz Band

WJ Budget Priorities: Supporting the Creation of Innovative Thinkers



Impacts +/-



Safety

Addition of a greeter
Addition of safety personnel



Student Supports

Maintaining support staff
Maintaining programs



Wellness

Personnel changes impact on students



Middle School Model

Change in programming, greatest impact on 6th grade



Potential Impacts

Future cuts will result in programmatic reductions

Bacon Academy Budget Priorities



Academic Growth



Student Wellness



Supports and intervention



Safety



Budgetary Impacts for Bacon Academy



Core academic

More limited course options



Reduced electives

Fewer options to meet graduation requirements



Student wellness

Support staff



Safety

Increase safety in the building



Supports

Special Education, 504, ELA and math intervention

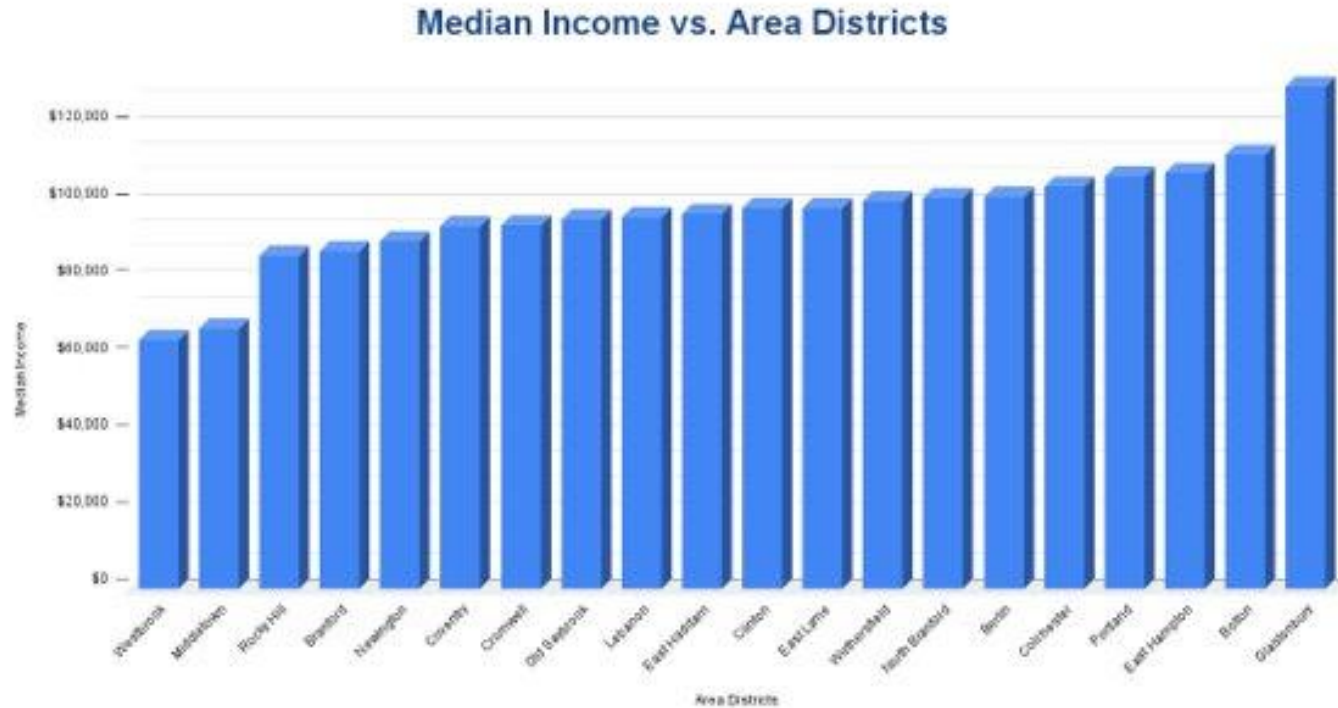


Connected

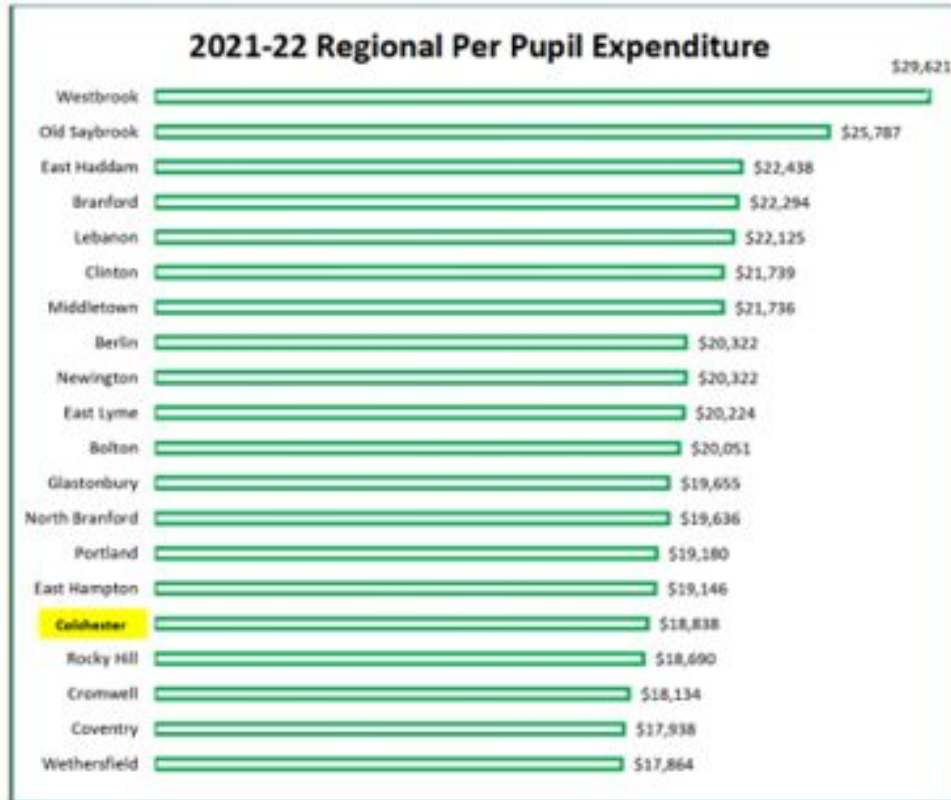
Sports, clubs and activities



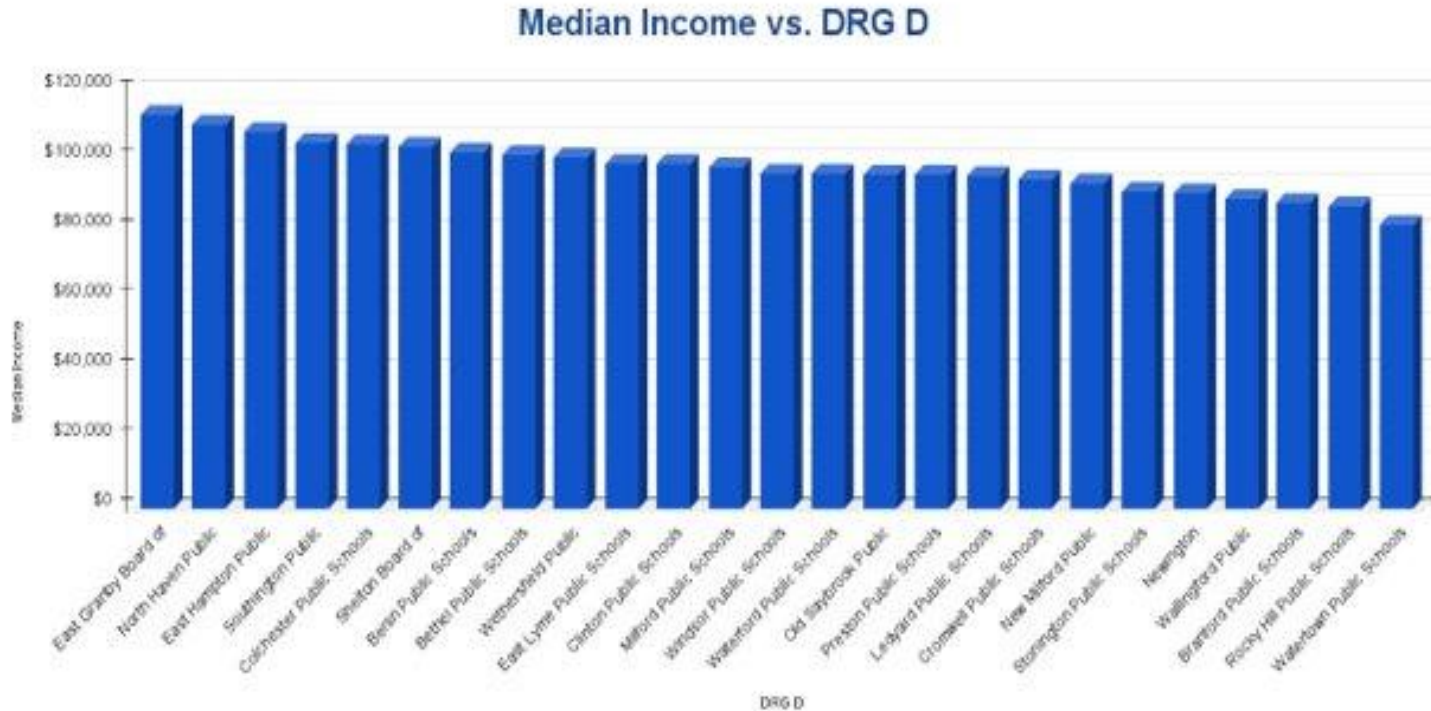
How do we compare locally?



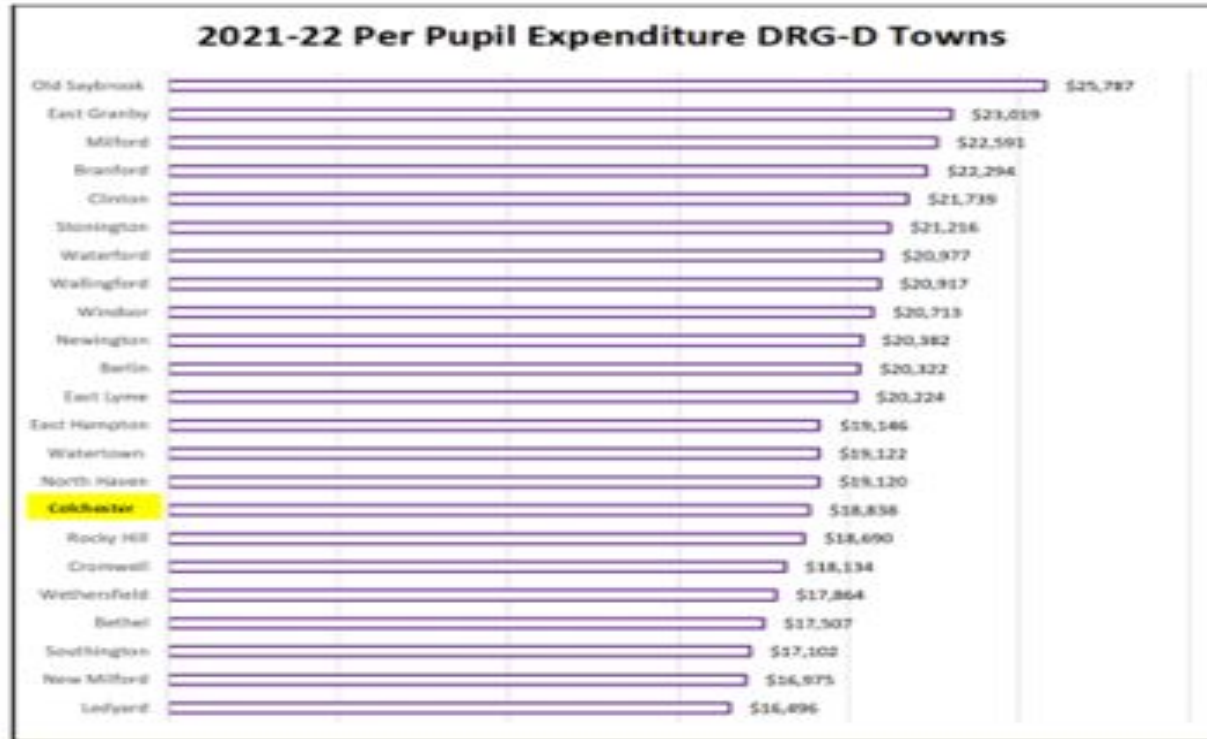
How do we compare locally?



How do we compare in our DRG?



How do we compare in our DRG?



Community Investment

- Home Values
- College Admission
- Reputation